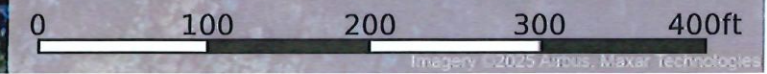


Missouri, AC +/-



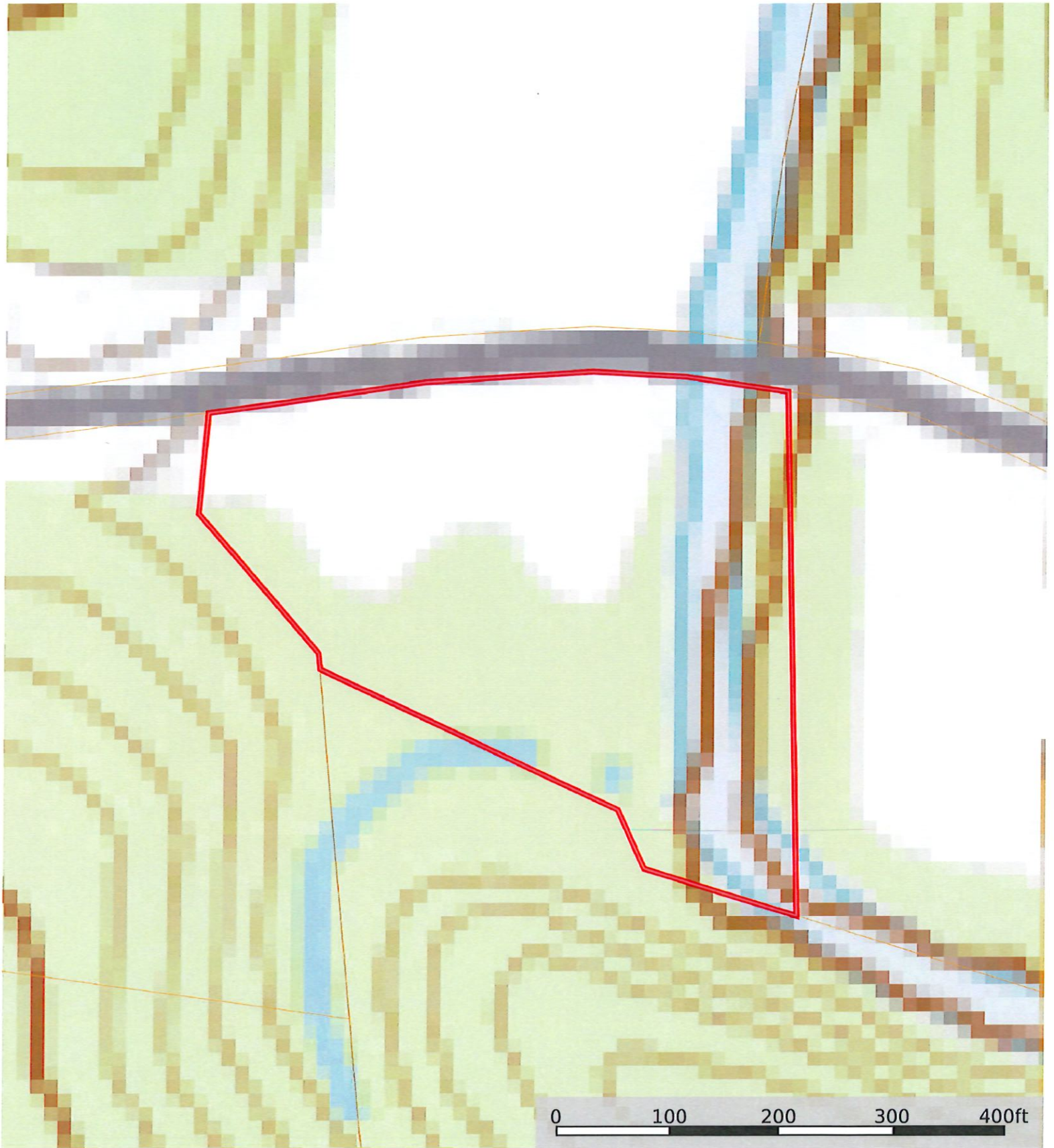
Google



 Boundary

**id.** The information contained herein was obtained from sources deemed to be reliable. Land id™ Services makes no warranties or guarantees as to the completeness or accuracy thereof.

Missouri, AC +/-



 Boundary

Missouri, AC +/-



 Boundary

 Boundary 3.95 ac

SOIL CODE	SOIL DESCRIPTION	ACRES	%	CPI	NCCPI	CAP
66014	Haymond silt loam, 0 to 3 percent slopes, frequently flooded	3.8	96.2	0	69	3w
60112	Goss very gravelly silt loam, 14 to 45 percent slopes	0.13	3.29	0	14	7e
60120	Goss-Gasconade-Brussels complex, 9 to 70 percent slopes, very stony	0.02	0.51	0	10	7e
TOTALS		3.95(*)	100%	-	66.89	3.15





(\*) Total acres may differ in the second decimal compared to the sum of each acreage soil. This is due to a round error because we only show the acres of each soil with two decimal.

### Capability Legend

Increased Limitations and Hazards

Decreased Adaptability and Freedom of Choice Users

Land, Capability

								
	1	2	3	4	5	6	7	8
'Wild Life'	•	•	•	•	•	•	•	•
Forestry	•	•	•	•	•	•	•	
Limited	•	•	•	•	•	•	•	
Moderate	•	•	•	•	•	•		
Intense	•	•	•	•	•			
Limited	•	•	•	•				
Moderate	•	•	•					
Intense	•	•						
Very Intense	•							

### Grazing Cultivation

(c) climatic limitations (e) susceptibility to erosion

(s) soil limitations within the rooting zone (w) excess of water