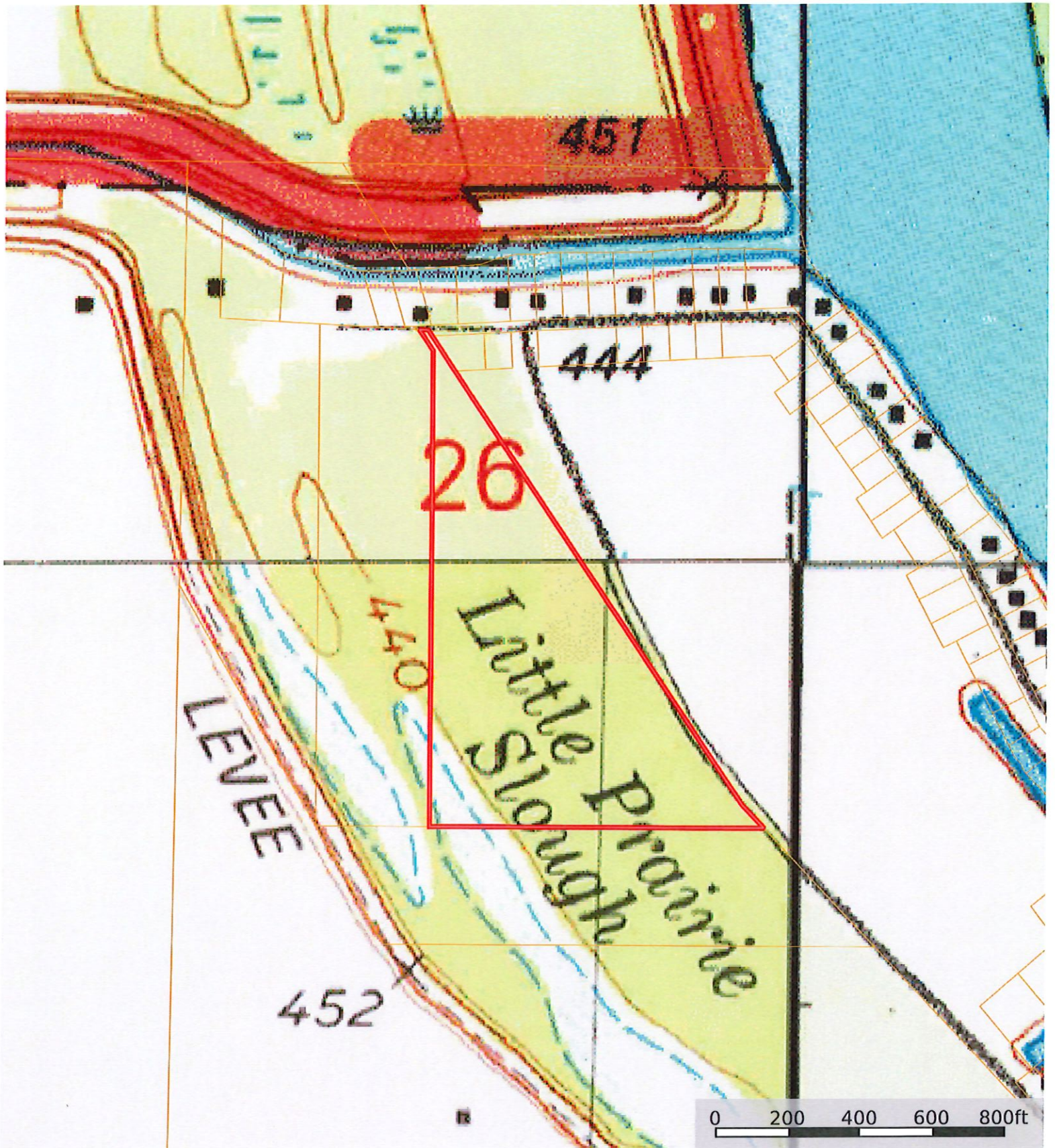


Missouri, AC +/-



 Boundary



 Boundary

Missouri, AC +/-



 Boundary

Boundary 14.21 ac

| SOIL CODE | SOIL DESCRIPTION  | ACRES    | %     | CPI | NCCPI | CAP |
|-----------|---|----------|-------|-----|-------|-----|
| 66074     | Chequest silty clay loam, 0 to 2 percent slopes, frequently flooded | 14.18    | 99.79 | 0   | 20    | 3w  |
| 66004     | Dockery silt loam, 0 to 2 percent slopes, frequently flooded        | 0.03     | 0.21  | 0   | 61    | 3w  |
| TOTALS    |   | 14.21(*) | 100%  | -   | 20.09 | 3.0 |

(\*) Total acres may differ in the second decimal compared to the sum of each acreage soil. This is due to a round error because we only show the acres of each soil with two decimal.

### Capability Legend

Increased Limitations and Hazards

Decreased Adaptability and Freedom of Choice Users

| Land, Capability | 1 | 2 | 3 | 4 | 5 | 6 | 7 | 8 |
|------------------|---|---|---|---|---|---|---|---|
| 'Wild Life'      | • | • | • | • | • | • | • | • |
| Forestry         | • | • | • | • | • | • | • |   |
| Limited          | • | • | • | • | • | • | • |   |
| Moderate         | • | • | • | • | • | • |   |   |
| Intense          | • | • | • | • | • |   |   |   |
| Limited          | • | • | • | • |   |   |   |   |
| Moderate         | • | • | • |   |   |   |   |   |
| Intense          | • | • |   |   |   |   |   |   |
| Very Intense     | • |   |   |   |   |   |   |   |

### Grazing Cultivation

- (c) climatic limitations (e) susceptibility to erosion
- (s) soil limitations within the rooting zone (w) excess of water