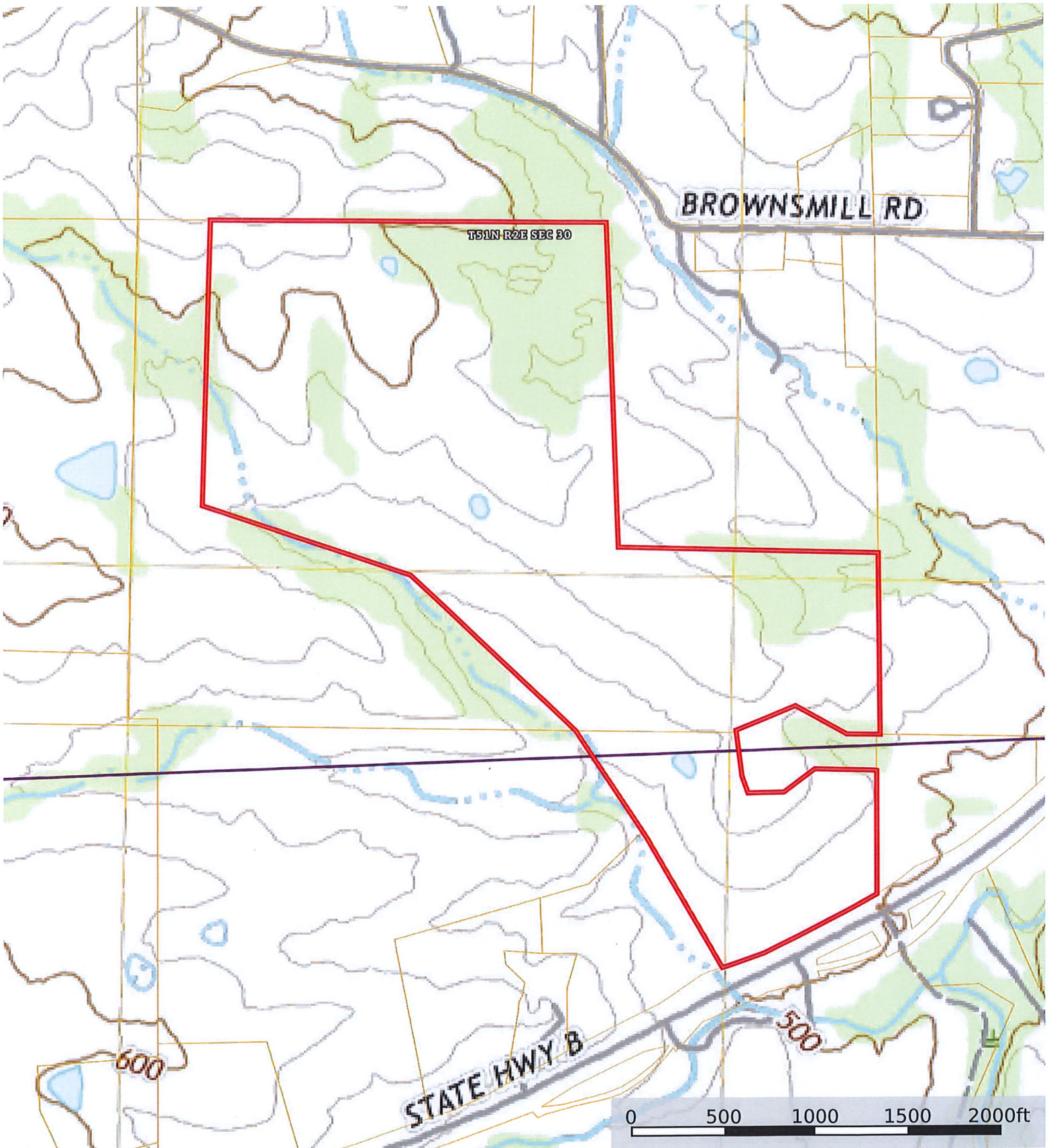
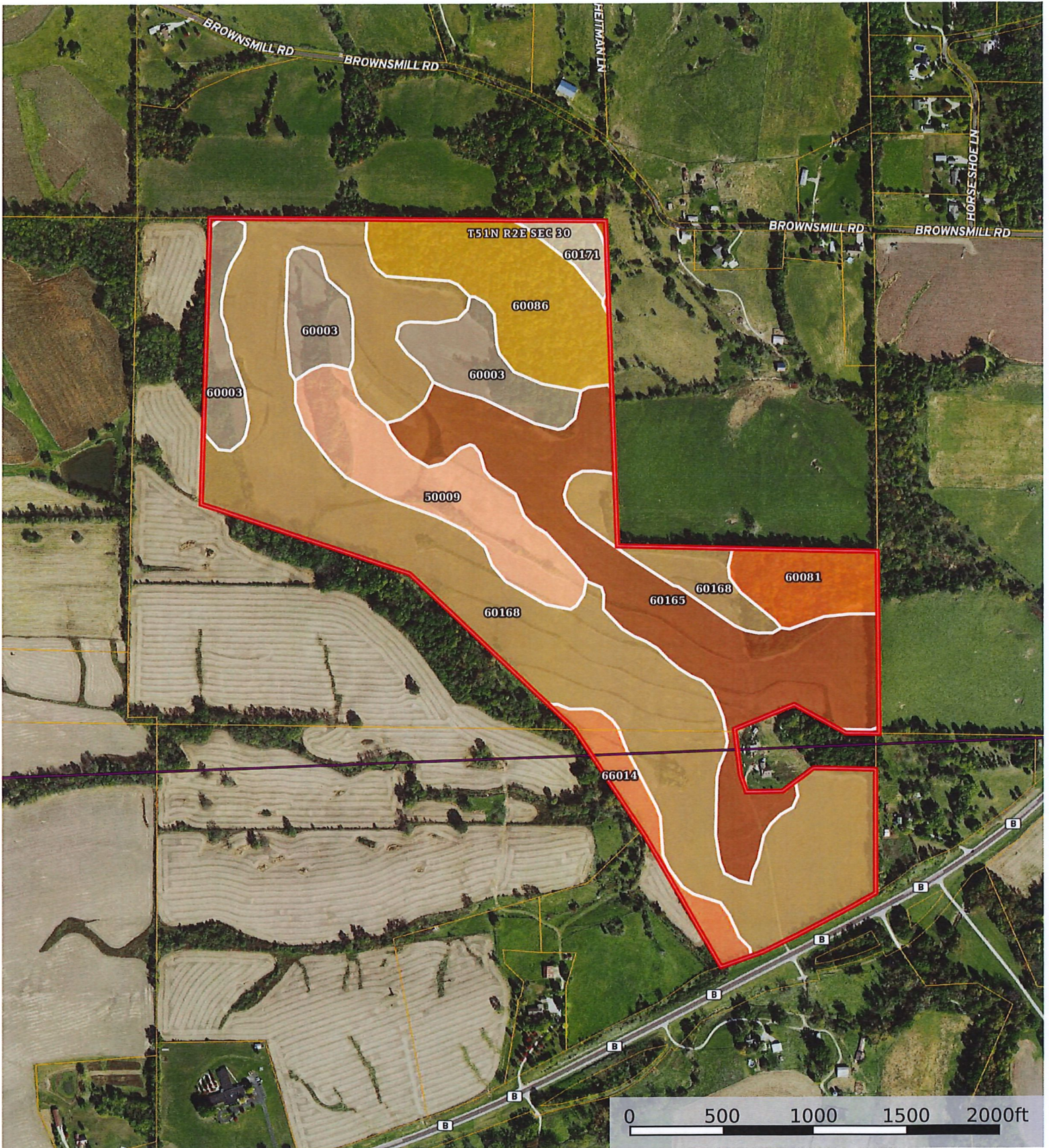




Boundary




 Boundary



Boundary



 Boundary 165.26 ac

SOIL CODE	SOIL DESCRIPTION	ACRES	%	CPI	NCCPI	CAP
60168	Menfro silt loam, 5 to 9 percent slopes, eroded	73.26	44.34	0	79	3e
60165	Menfro silt loam, 2 to 5 percent slopes	33.08	20.02	0	84	2e
60003	Menfro silt loam, 9 to 14 percent slopes, eroded	15.61	9.45	0	76	4e
60086	Crider silt loam, 9 to 14 percent slopes, eroded	15.44	9.34	0	69	4e
50009	Keswick silt loam, 9 to 14 percent slopes, eroded	14.11	8.54	0	52	4e
60081	Crider silt loam, 14 to 20 percent slopes	6.57	3.98	0	68	6e
66014	Haymond silt loam, 0 to 3 percent slopes, frequently flooded	5.02	3.04	0	69	3w
60171	Menfro silt loam, karst, 2 to 14 percent slopes, eroded	2.17	1.31	0	79	3e
TOTALS		165.26(*)	100%	-	75.75	3.19

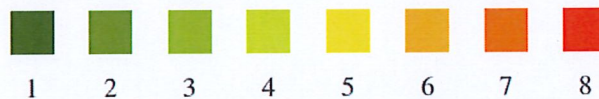
(*) Total acres may differ in the second decimal compared to the sum of each acreage soil. This is due to a round error because we only show the acres of each soil with two decimal.

Capability Legend

Increased Limitations and Hazards

Decreased Adaptability and Freedom of Choice Users

Land, Capability



'Wild Life'



Forestry



Limited



Moderate



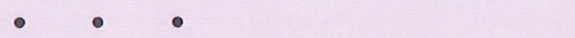
Intense



Limited



Moderate



Intense



Very Intense



Grazing Cultivation

(c) climatic limitations (e) susceptibility to erosion

(s) soil limitations within the rooting zone (w) excess of water