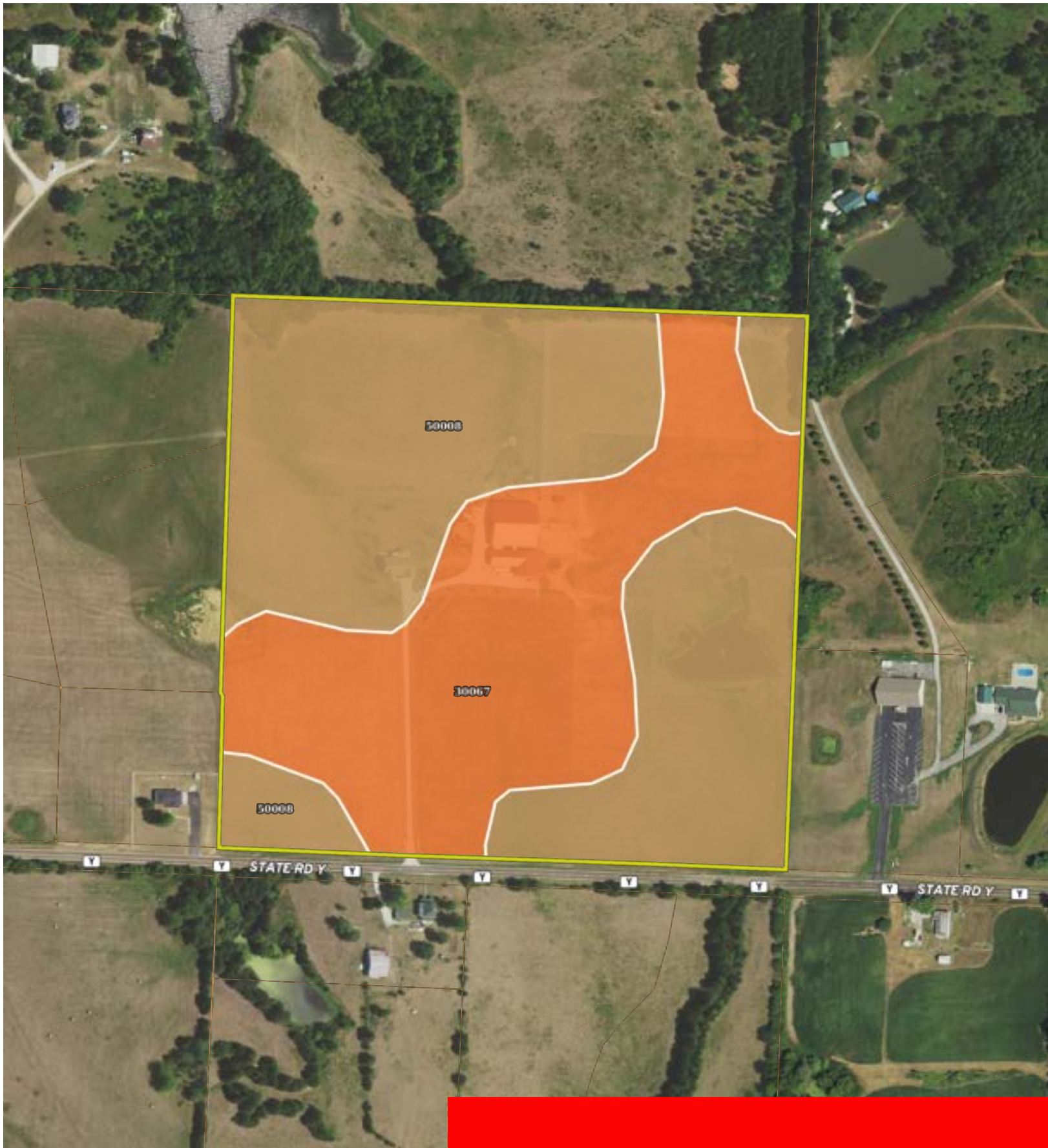
 Boundary

Missouri, AC +/-



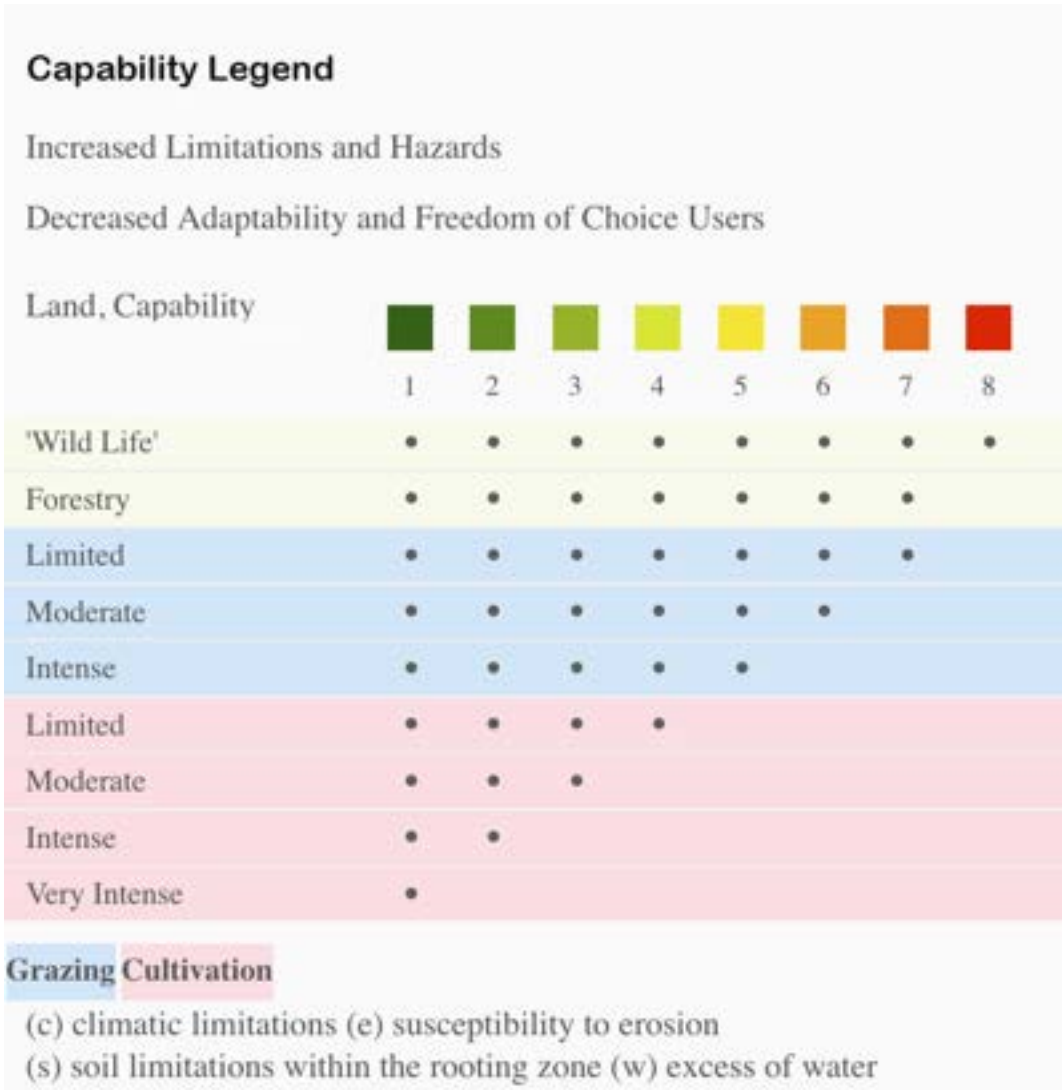
Boundary

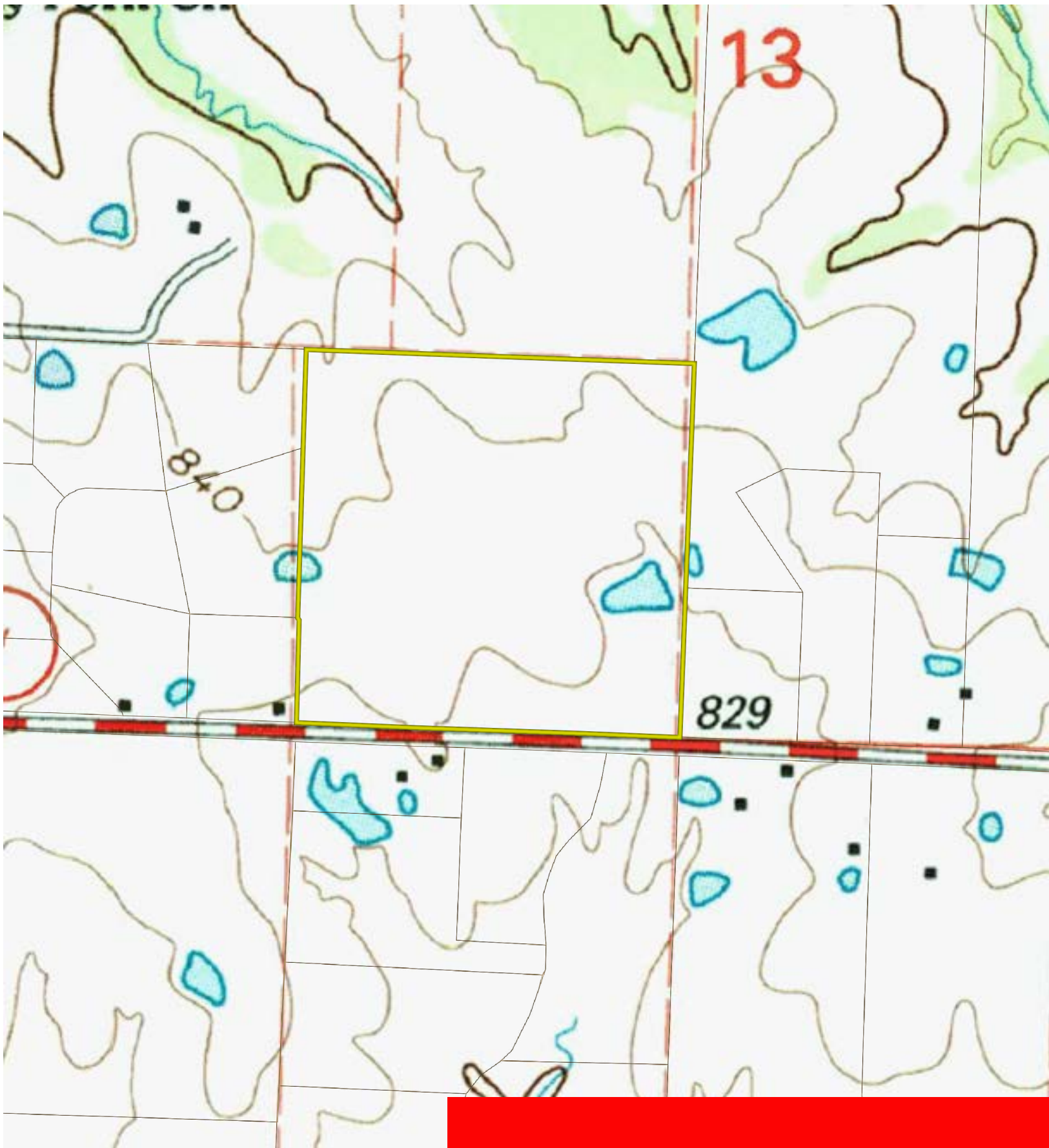


|  Boundary 40.02 ac

SOIL CODE	SOIL DESCRIPTION	ACRES	%	CPI	NCCPI	CAP
50008	Keswick silt loam, 5 to 9 percent slopes, eroded	24.11	60.26	0	58	3e
30067	Gorin silt loam, 3 to 9 percent slopes, eroded	15.91	39.77	0	70	3e
TOTALS		40.02(*)	100%	-	62.79	3.0

(*) Total acres may differ in the second decimal compared to the sum of each acreage soil. This is due to a round error because we only show the acres of each soil with two decimal.





13

840

829



Boundary