



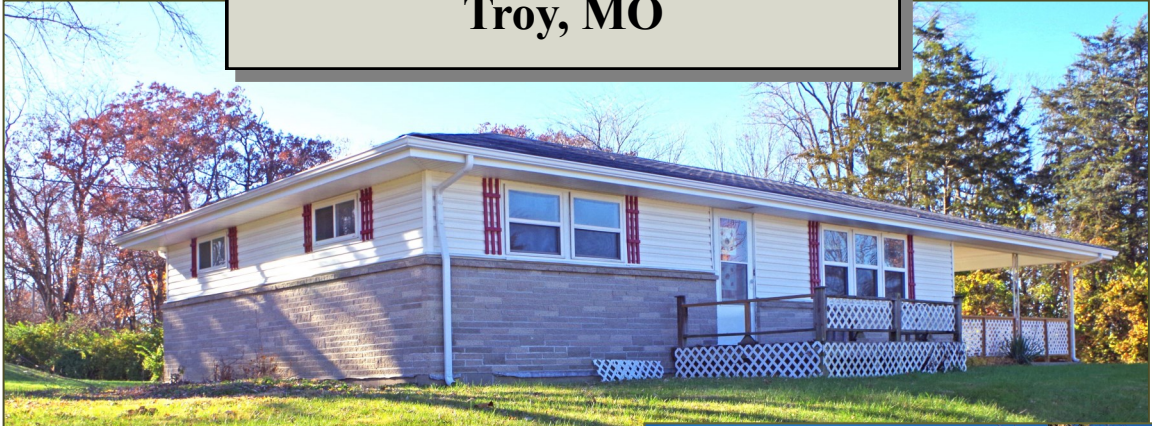
# Tom Anderson

## REAL ESTATE

146 West 2nd Street  
P.O. Box 168  
Moscow Mills, MO 63362  
636-366-4880  
www.tarealestate.com

Residential or Commercial Usage

Ranch Home on .5 Acres  
"North Lincoln Dr"  
Troy, MO



- 2 Bedrm/1 Ba
- Open Floor Plan
- Well & Septic
- Located on North Edge of Troy
- Not in City Limits
- Overlooking Hwy 61

Asking Price  
**\$195,000**

*Home on .5 Acres overlooking Highway 61 recently repainted with new flooring. Ideal for Permanent Residence or Multiple Commercial Use.*

**For Information or Showing Contact Tom Anderson at 636-262-4447**

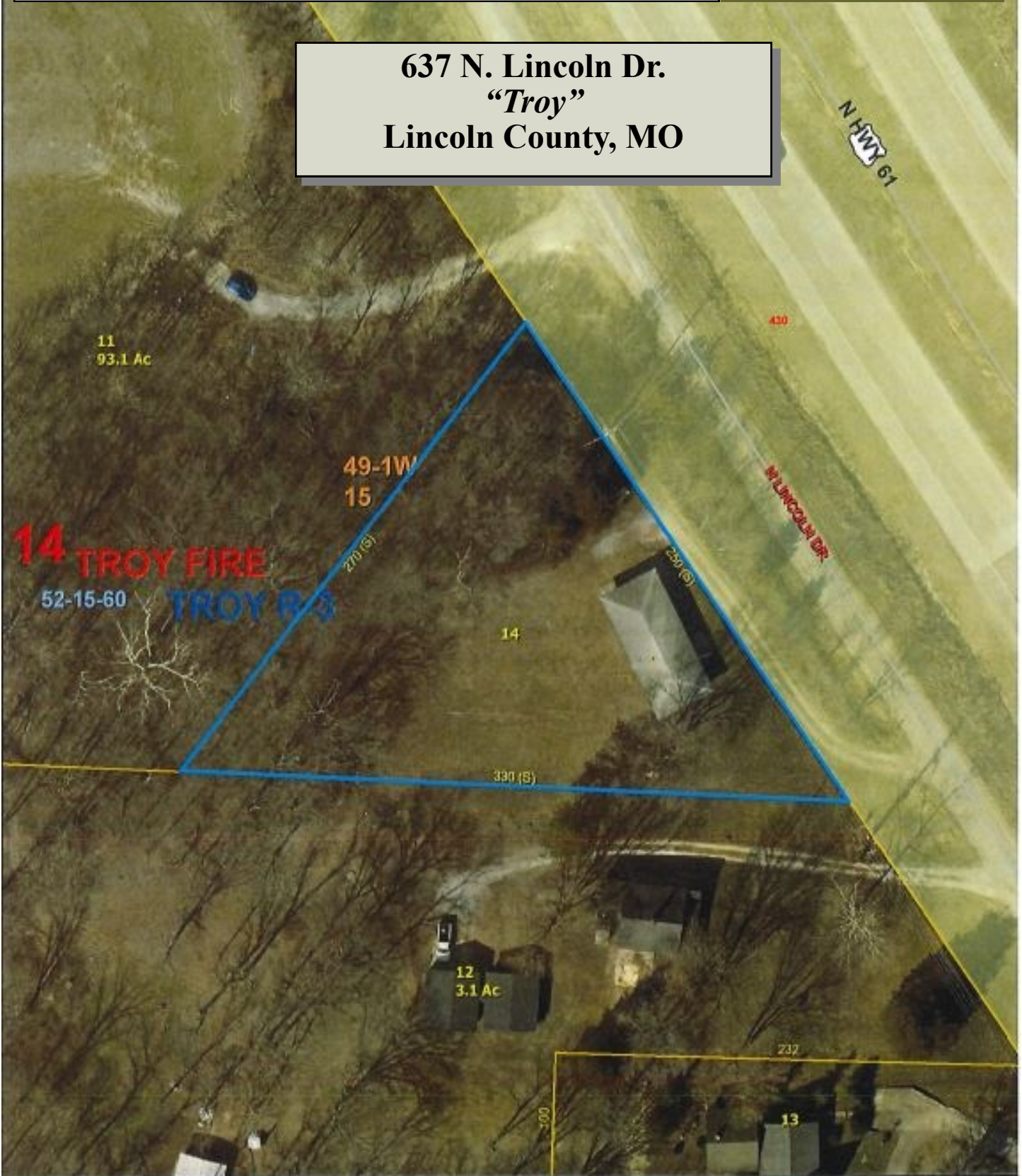
*This offering is subject to error, omission, prior sale, change of price, or withdrawal without notice. Information contained in the presentation is deemed reliable but not warranted.*

# TA Tom Anderson

REAL ESTATE

146 West 2nd Street  
P.O. Box 168  
Moscow Mills, MO 63362  
636-366-4880  
www.tarealestate.com

637 N. Lincoln Dr.  
"Troy"  
Lincoln County, MO



For Information or Showing Contact Tom Anderson at 636-262-4447

*This offering is subject to error, omission, prior sale, change of price, or withdrawal without notice. Information contained in the presentation is deemed reliable but not warranted.*