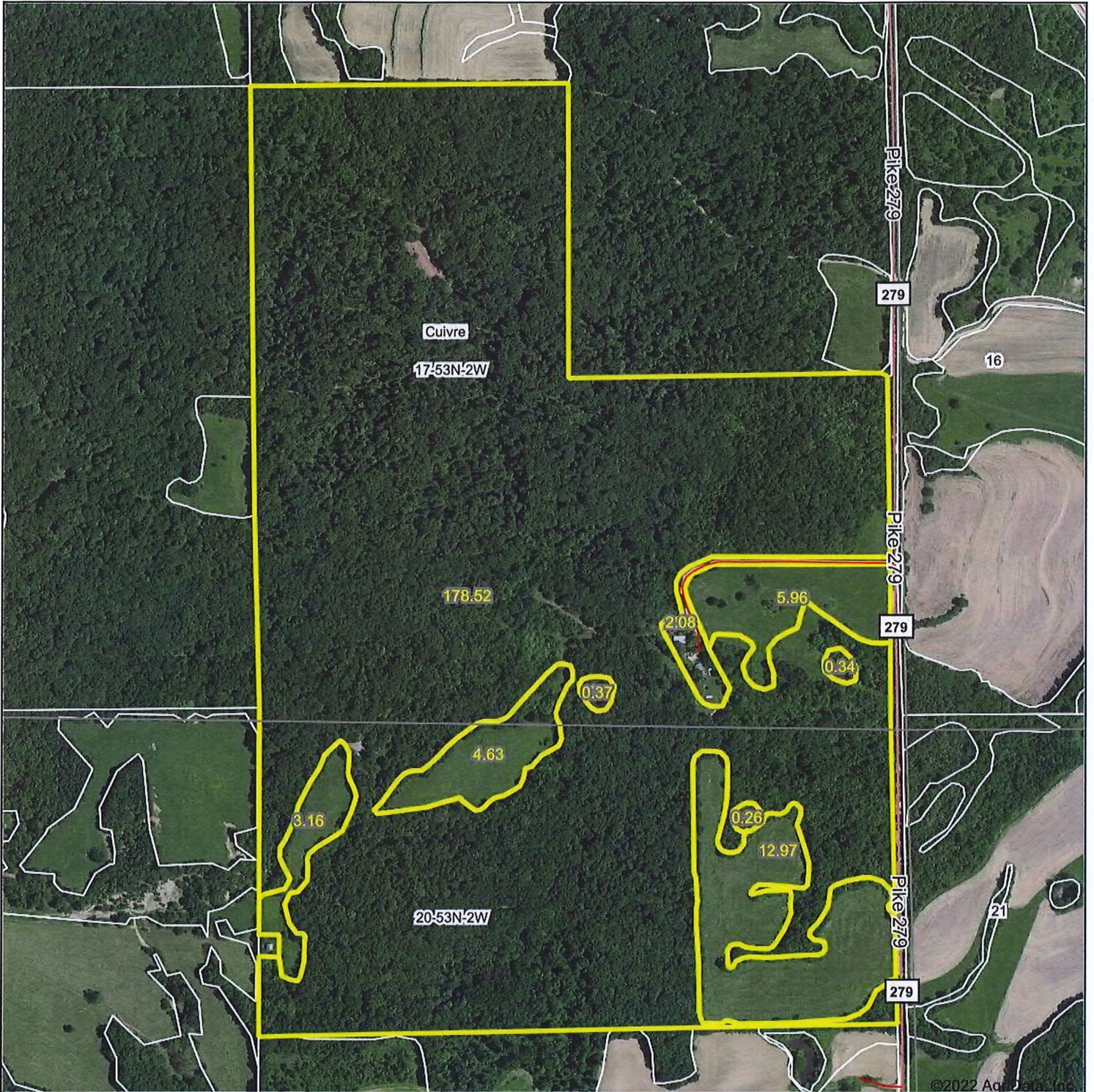


# Aerial Map



©2022 AgriData, Inc.



Map Center: 39° 21' 37.44, -91° 8' 37.16



17-53N-2W  
Pike County  
Missouri



5/11/2022

Maps Provided By:  
 **surety**  
CUSTOMIZED ONLINE MAPPING  
© AgriData, Inc. 2021 www.AgriDataInc.com

Field borders provided by Farm Service Agency as of 5/21/2008.

# Topography Map



© 2022 AgriData, Inc.



map center: 39° 21' 37.44, -91° 8' 37.16



17-53N-2W  
Pike County  
Missouri



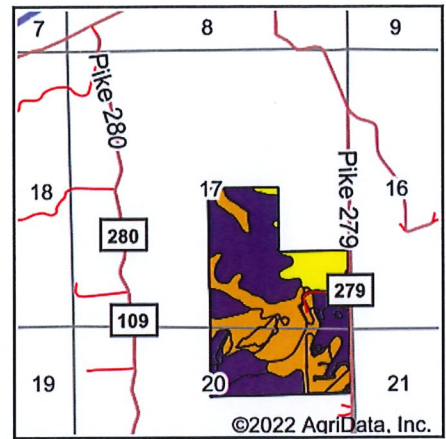
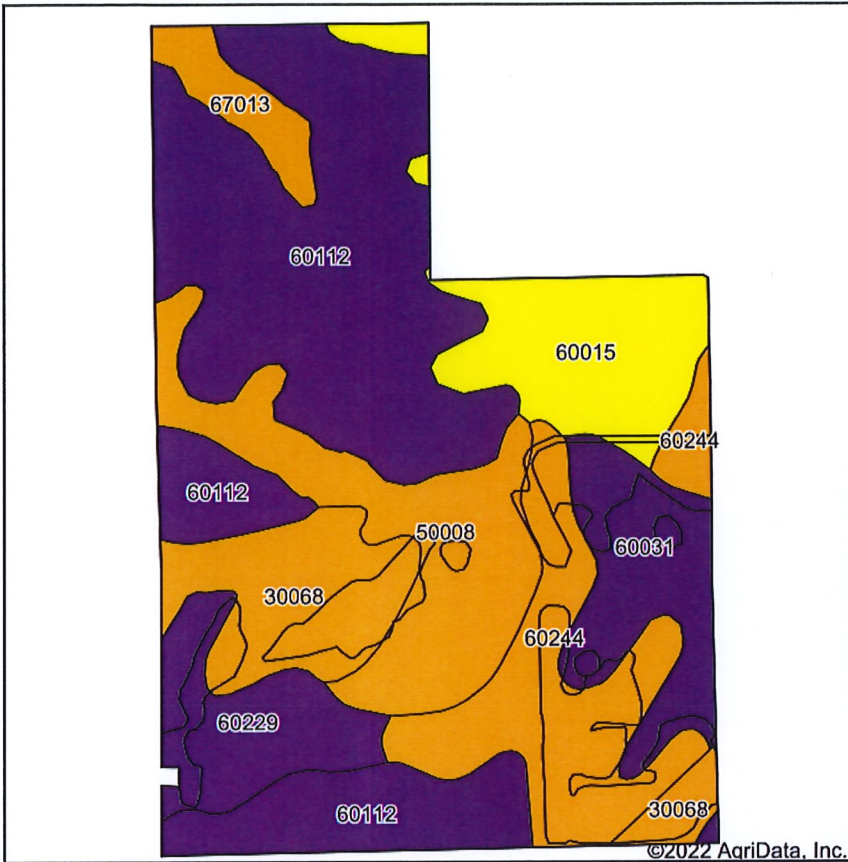
5/11/2022



© AgriData, Inc. 2021 www.AgriDataInc.com

Field borders provided by Farm Service Agency as of 5/21/2008.

# Soils Map



State: **Missouri**  
 County: **Pike**  
 Location: **17-53N-2W**  
 Township: **Cuivre**  
 Acres: **208.29**  
 Date: **5/11/2022**



Soils data provided by USDA and NRCS.

Area Symbol: MO163, Soil Area Version: 23

Code	Soil Description	Acres	Percent of field	Non-Irr Class Legend	Non-Irr Class *c	Corn Bu	Grass legume hay Tons	Grass legume pasture Tons	Soybeans Bu	Wheat Bu	*n NCCPI Overall	*n NCCPI Corn	*n NCCPI Small Grains	*n NCCPI Soybeans	*n NCCPI Cotton
60112	Goss very gravelly silt loam, 14 to 45 percent slopes	76.10	36.5%		Vlle						16	16	12	7	
60244	Winfield silt loam, 5 to 10 percent slopes, eroded	27.32	13.1%		Ille	132	4.1	6.8	40	52	83	83	70	67	
50008	Keswick silt loam, 5 to 9 percent slopes, eroded	26.91	12.9%		Ille						61	61	56	49	
60015	Goss gravelly silt loam, 9 to 14 percent slopes, eroded	21.06	10.1%		Ive						55	55	43	36	
30068	Gorin silt loam, 5 to 9 percent slopes, eroded	19.68	9.4%		Ille						76	76	63	57	
60031	Winfield silt loam, 9 to 14 percent slopes, eroded	17.15	8.2%		Vle						76	76	58	60	3
60229	Vanmeter silty clay loam, 14 to 35 percent slopes, eroded	14.36	6.9%		Vle						9	9	8	4	

Maps Provided By:



© AgriData, Inc. 2021 www.AgriDataInc.com

67013	Cedargap-Dameron complex, 1 to 3 percent slopes, frequently flooded	5.71	2.7%		Illw						60	60	47	51	
<b>Weighted Average</b>					5.02	17.3	0.5	0.9	5.2	6.8	*n 45.9	*n 45.9	*n 37.7	*n 33.3	*n 0.2

\*n: The aggregation method is "Weighted Average using all components"

\*c: Using Capabilities Class Dominant Condition Aggregation Method

Soils data provided by USDA and NRCS.