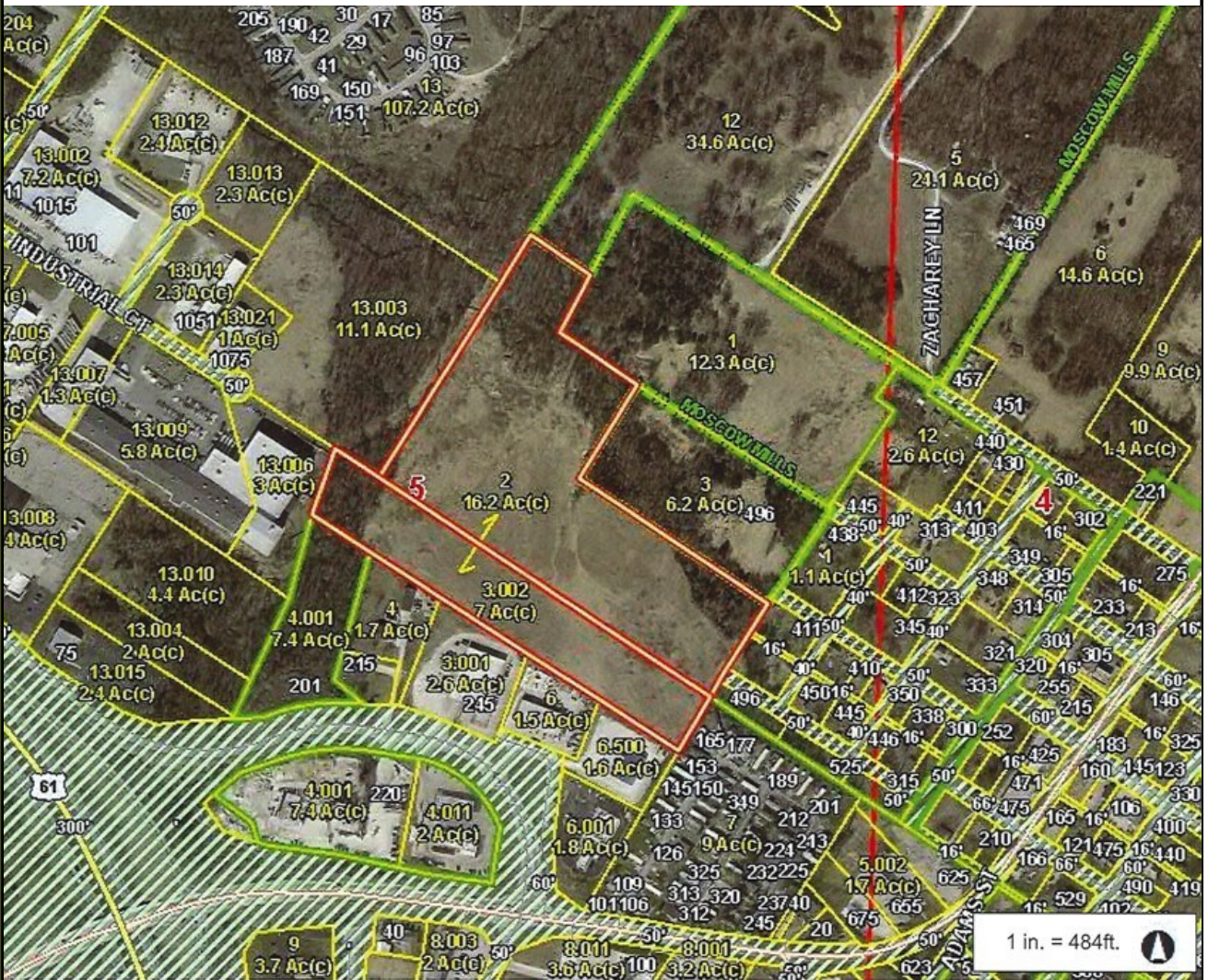


Excellent Site for Residential, Multi-Family, or Commercial

23 Acres  
 "Moscow Mills"  
 Lincoln County, MO



- Located off Moscow Mills overpass
- City Water and Sewer Available

Asking Price: \$826,000  
 \$35,000 Per Acre

**Directions:**

From Hwy 61 and C Overpass, east to left on College Campus Drive to access through road on right across from gas station or access of Front Street in Old Town Moscow Mills.

*This offering is subject to error, omission, prior sale, change or price, or withdrawal without notice.  
 Information contained in the presentation is deemed reliable but not warranted.*